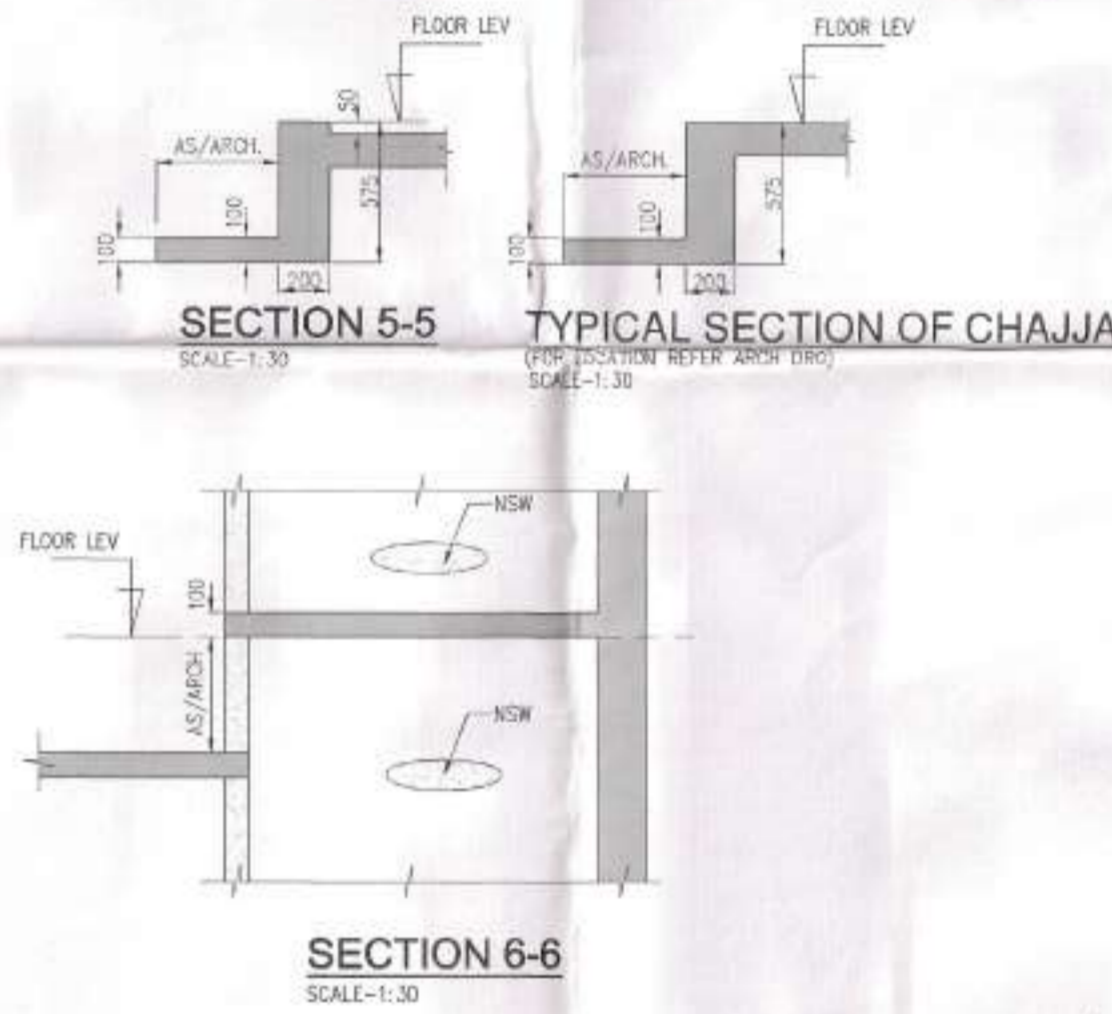
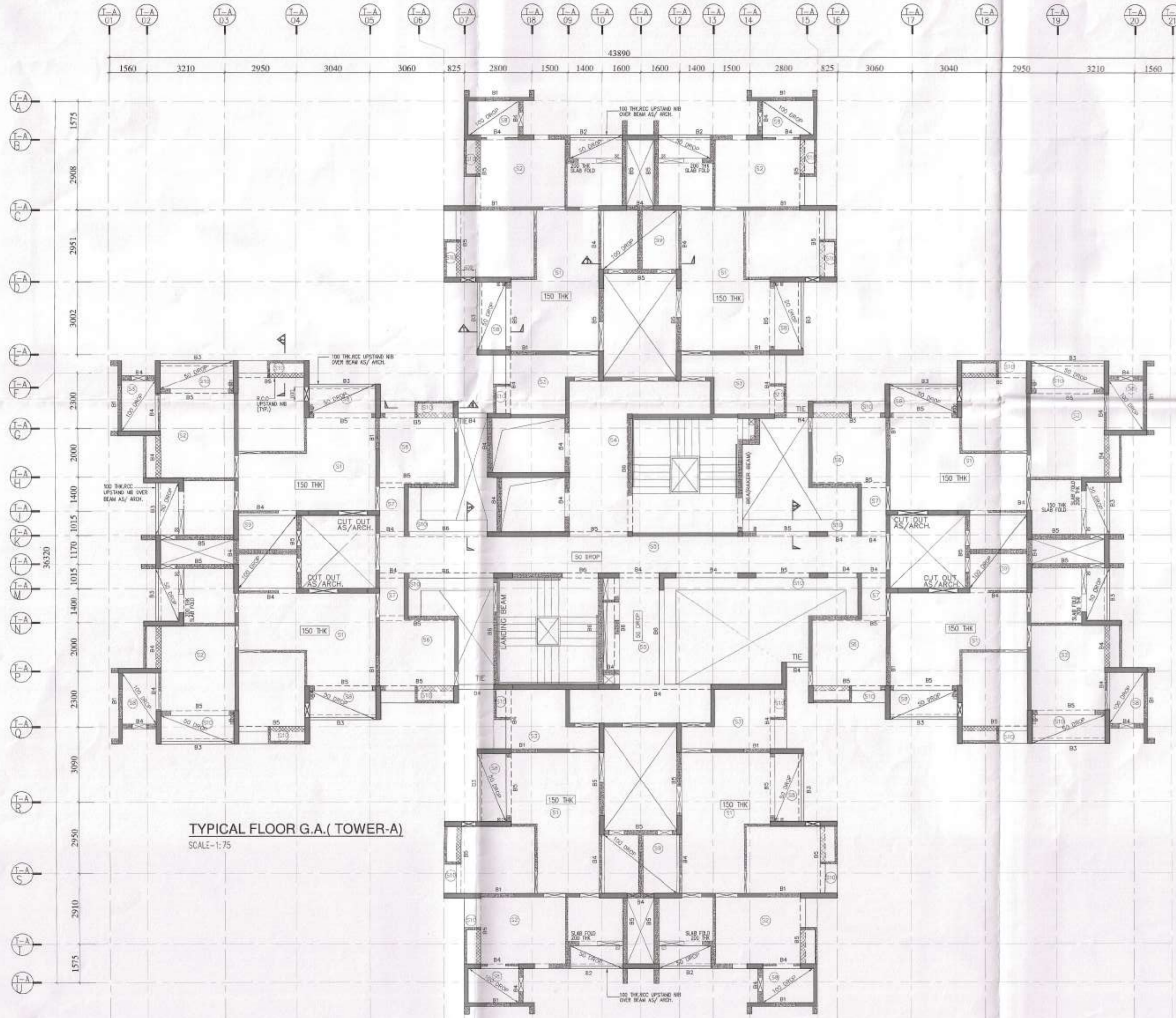


**SCHEDULE OF BEAMS**

BEAM MKD	BEAM SIZE	BEAM REINFORCEMENT						STIRRUPS		REMARKS	
		END SUPPT (T)	(R)	MID SPAN (T)	(B)	CONT. SUPPT (T)	(B)	CANT. END (T)	(B)		
B1	160x575	2-20T	2-20T	2-20T	2-20T	2-20T	2-20T	-	-	10T-2L @ 100C/C	10T-2L @ 200C/C
B2	(200x575/525)	2-16T+	2-16T	2-16T	2-16T+	2-16T+	2-16T	-	-	10T-2L @ 100C/C	10T-2L @ 200C/C
B3	200x525	2-16T+	2-16T	2-16T	2-16T+	2-16T+	2-16T	-	-	8T-2L @ 100C/C	8T-2L @ 200C/C
B4	200x575	2-16T+	2-16T	2-16T	2-16T+	2-16T+	2-16T	-	-	8T-2L @ 100C/C	8T-2L @ 200C/C
B5	200x575	2-16T+	2-16T	2-16T	2-16T+	2-16T+	2-16T	-	-	8T-2L @ 100C/C	8T-2L @ 200C/C
B6	200x575	2-20T+	2-20T	2-20T	2-20T+	2-20T+	2-20T	-	-	10T-2L @ 100C/C	10T-2L @ 200C/C
B7	200x575	2-20T+	2-20T	2-20T	2-20T+	2-20T+	2-20T	-	-	10T-2L @ 100C/C	10T-2L @ 200C/C
B8	200x525	-	-	-	-	-	2-16T+	2-16T	-	10T-2L @ 100C/C	10T-2L @ 100C/C
B9	200x525	2-16T+	2-16T	2-16T	2-16T+	2-16T+	2-16T	-	-	8T-2L @ 100C/C	8T-2L @ 200C/C
B10	200x575	2-16T+	2-16T	2-16T	2-16T	-	-	-	-	8T-2L @ 100C/C	8T-2L @ 200C/C
B11	200x575	2-16T+	2-16T	2-16T	2-16T	2-16T+	2-16T	-	-	8T-2L @ 100C/C	8T-2L @ 200C/C
B12	150x575	2-16T	2-16T	2-16T	2-16T	2-16T	2-16T	-	-	8T-2L @ 100C/C	8T-2L @ 200C/C

**SCHEDULE OF SLABS**

SLAB MKD	SLAB THICKNESS	SHORTER DIR.		LONGER DIR.		DISTRIBUTION BAR
		SUPPORT	MID SPAN	SUPPORT	MID SPAN	
S1	150	10T@100C/C	10T@125C/C	10T@100C/C	10T@125C/C	10T @ 300 c/c
S2	125	10T@100C/C	10T@125C/C	10T@125C/C	10T@150C/C	10T @ 300 c/c
S3	125	10T@150C/C	10T@175C/C	10T@175C/C	10T@200C/C	10T @ 300 c/c
S4	125	10T@125C/C	10T@150C/C	10T@150C/C	10T@175C/C	10T @ 300 c/c
S5	125	10T@125C/C	10T@150C/C	10T@125C/C	10T@150C/C	10T @ 300 c/c
S6	125	10T@120C/C	10T@150C/C	10T@125C/C	10T@150C/C	10T @ 300 c/c
S7	125	10T@150C/C	10T@175C/C	10T@175C/C	10T@200C/C	10T @ 300 c/c
S8	125	10T@150C/C	10T@175C/C	10T@100C/C	10T@175C/C	10T @ 300 c/c
S9	125	10T@150C/C	10T@175C/C	10T@175C/C	10T@200C/C	10T @ 300 c/c
S10	125	10T@100C/C	10T@100C/C	CANTILEVER		10T @ 300 c/c

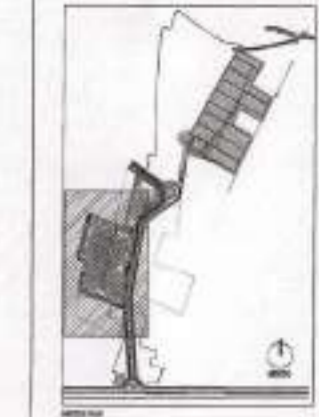


**LEGEND:**

- FLOOR BEAM
- STRUCTURAL WALL 200 THK
- STRUCTURAL WALL 160 THK
- NON STRUCTURAL WALL

**PROJECT**  
PROPOSED G+15 STORED RESIDENTIAL COMPLEX OF 10 BLOCKS AND G+2 STORED CLUB HOUSE FOR DTC PROJECTS PVT. LTD. AT RAJARHAT, P.O. - KAMDUNI - MOUZA - MATAGACCHA, BLOCK-BARASAT-2, J.L. NO. - 187, 188 P.S. RAJARHAT ; DAG NO. 4292/5210/4292/5211; 4291/4327/4294/4295 4293/875/884/886/1032, UNDER KIRTIPUR-2 GRAM PANCHAYAT, DIST.-24 PARGANAS(N)

- NOTES:**
- ALL DIMENSIONS ARE IN MM UNLESS IT IS MENTIONED.
  - THE RAIN WATER AND SITE WATER DISPOSAL IS COLLECTED FOR RAIN WATER HARVESTING.
  - ALL ELECTRICAL INSTALLATIONS SHALL BE AS PER PROVISION OF NBC.
  - FIRE-FIGHTING / SAFETY PROVISIONS WILL BE AS PER RELEVANT NBC PROVISIONS.
  - ALL TOILETS ARE VENTILATED AS PER WEST BENGAL MUNICIPAL BUILDING RULES, 2007
  - BUILDING WILL BE DESIGNED (STRUCTURES) AS PER RELEVANT I.S. CODES FOR EARTHQUAKE RESISTANCE.
  - PLEASE NOTE THAT THE DIMENSIONS IN THE DRAWINGS ARE TO BE READ, NOT MEASURED.



**DTC PROJECTS PVT. LTD.**  
Kai Khola  
Authorised Signatory

**SIGNATURE OF OWNER & SEAL**  
DTC PROJECTS PVT. LTD.  
ADDRESS : 1 NS ROAD, KOLKATA-700011

WE DO HEREBY CERTIFY THAT THE FOUNDATION AND SUPERSTRUCTURE OF THE BUILDING PROPOSED FOR CONSTRUCTION ON THIS PREMISES HAVE BEEN SO DESIGNED BY ME/US WILL MAKE SUCH FOUNDATION AND SUPERSTRUCTURE SAFE IN ALL RESPECT INCLUDING THE CONSIDERATION OF BEARING CAPACITY AND SETTLEMENT OF SOIL ETC.

**SIGNATURE OF MEP CONSULTANT & SEAL**  
Consummate Engineering Services (P) Ltd.

**cespi**  
Head Office : B-13, Sector - 02, Noida - 201 308  
Reg. Office : 4/106, 10/105, 10/106, 10/107, 10/108, 10/109, 10/110, 10/111, 10/112, 10/113, 10/114, 10/115, 10/116, 10/117, 10/118, 10/119, 10/120, 10/121, 10/122, 10/123, 10/124, 10/125, 10/126, 10/127, 10/128, 10/129, 10/130, 10/131, 10/132, 10/133, 10/134, 10/135, 10/136, 10/137, 10/138, 10/139, 10/140, 10/141, 10/142, 10/143, 10/144, 10/145, 10/146, 10/147, 10/148, 10/149, 10/150, 10/151, 10/152, 10/153, 10/154, 10/155, 10/156, 10/157, 10/158, 10/159, 10/160, 10/161, 10/162, 10/163, 10/164, 10/165, 10/166, 10/167, 10/168, 10/169, 10/170, 10/171, 10/172, 10/173, 10/174, 10/175, 10/176, 10/177, 10/178, 10/179, 10/180, 10/181, 10/182, 10/183, 10/184, 10/185, 10/186, 10/187, 10/188, 10/189, 10/190, 10/191, 10/192, 10/193, 10/194, 10/195, 10/196, 10/197, 10/198, 10/199, 10/200, 10/201, 10/202, 10/203, 10/204, 10/205, 10/206, 10/207, 10/208, 10/209, 10/210, 10/211, 10/212, 10/213, 10/214, 10/215, 10/216, 10/217, 10/218, 10/219, 10/220, 10/221, 10/222, 10/223, 10/224, 10/225, 10/226, 10/227, 10/228, 10/229, 10/230, 10/231, 10/232, 10/233, 10/234, 10/235, 10/236, 10/237, 10/238, 10/239, 10/240, 10/241, 10/242, 10/243, 10/244, 10/245, 10/246, 10/247, 10/248, 10/249, 10/250, 10/251, 10/252, 10/253, 10/254, 10/255, 10/256, 10/257, 10/258, 10/259, 10/260, 10/261, 10/262, 10/263, 10/264, 10/265, 10/266, 10/267, 10/268, 10/269, 10/270, 10/271, 10/272, 10/273, 10/274, 10/275, 10/276, 10/277, 10/278, 10/279, 10/280, 10/281, 10/282, 10/283, 10/284, 10/285, 10/286, 10/287, 10/288, 10/289, 10/290, 10/291, 10/292, 10/293, 10/294, 10/295, 10/296, 10/297, 10/298, 10/299, 10/300, 10/301, 10/302, 10/303, 10/304, 10/305, 10/306, 10/307, 10/308, 10/309, 10/310, 10/311, 10/312, 10/313, 10/314, 10/315, 10/316, 10/317, 10/318, 10/319, 10/320, 10/321, 10/322, 10/323, 10/324, 10/325, 10/326, 10/327, 10/328, 10/329, 10/330, 10/331, 10/332, 10/333, 10/334, 10/335, 10/336, 10/337, 10/338, 10/339, 10/340, 10/341, 10/342, 10/343, 10/344, 10/345, 10/346, 10/347, 10/348, 10/349, 10/350, 10/351, 10/352, 10/353, 10/354, 10/355, 10/356, 10/357, 10/358, 10/359, 10/360, 10/361, 10/362, 10/363, 10/364, 10/365, 10/366, 10/367, 10/368, 10/369, 10/370, 10/371, 10/372, 10/373, 10/374, 10/375, 10/376, 10/377, 10/378, 10/379, 10/380, 10/381, 10/382, 10/383, 10/384, 10/385, 10/386, 10/387, 10/388, 10/389, 10/390, 10/391, 10/392, 10/393, 10/394, 10/395, 10/396, 10/397, 10/398, 10/399, 10/400, 10/401, 10/402, 10/403, 10/404, 10/405, 10/406, 10/407, 10/408, 10/409, 10/410, 10/411, 10/412, 10/413, 10/414, 10/415, 10/416, 10/417, 10/418, 10/419, 10/420, 10/421, 10/422, 10/423, 10/424, 10/425, 10/426, 10/427, 10/428, 10/429, 10/430, 10/431, 10/432, 10/433, 10/434, 10/435, 10/436, 10/437, 10/438, 10/439, 10/440, 10/441, 10/442, 10/443, 10/444, 10/445, 10/446, 10/447, 10/448, 10/449, 10/450, 10/451, 10/452, 10/453, 10/454, 10/455, 10/456, 10/457, 10/458, 10/459, 10/460, 10/461, 10/462, 10/463, 10/464, 10/465, 10/466, 10/467, 10/468, 10/469, 10/470, 10/471, 10/472, 10/473, 10/474, 10/475, 10/476, 10/477, 10/478, 10/479, 10/480, 10/481, 10/482, 10/483, 10/484, 10/485, 10/486, 10/487, 10/488, 10/489, 10/490, 10/491, 10/492, 10/493, 10/494, 10/495, 10/496, 10/497, 10/498, 10/499, 10/500, 10/501, 10/502, 10/503, 10/504, 10/505, 10/506, 10/507, 10/508, 10/509, 10/510, 10/511, 10/512, 10/513, 10/514, 10/515, 10/516, 10/517, 10/518, 10/519, 10/520, 10/521, 10/522, 10/523, 10/524, 10/525, 10/526, 10/527, 10/528, 10/529, 10/530, 10/531, 10/532, 10/533, 10/534, 10/535, 10/536, 10/537, 10/538, 10/539, 10/540, 10/541, 10/542, 10/543, 10/544, 10/545, 10/546, 10/547, 10/548, 10/549, 10/550, 10/551, 10/552, 10/553, 10/554, 10/555, 10/556, 10/557, 10/558, 10/559, 10/560, 10/561, 10/562, 10/563, 10/564, 10/565, 10/566, 10/567, 10/568, 10/569, 10/570, 10/571, 10/572, 10/573, 10/574, 10/575, 10/576, 10/577, 10/578, 10/579, 10/580, 10/581, 10/582, 10/583, 10/584, 10/585, 10/586, 10/587, 10/588, 10/589, 10/590, 10/591, 10/592, 10/593, 10/594, 10/595, 10/596, 10/597, 10/598, 10/599, 10/600, 10/601, 10/602, 10/603, 10/604, 10/605, 10/606, 10/607, 10/608, 10/609, 10/610, 10/611, 10/612, 10/613, 10/614, 10/615, 10/616, 10/617, 10/618, 10/619, 10/620, 10/621, 10/622, 10/623, 10/624, 10/625, 10/626, 10/627, 10/628, 10/629, 10/630, 10/631, 10/632, 10/633, 10/634, 10/635, 10/636, 10/637, 10/638, 10/639, 10/640, 10/641, 10/642, 10/643, 10/644, 10/645, 10/646, 10/647, 10/648, 10/649, 10/650, 10/651, 10/652, 10/653, 10/654, 10/655, 10/656, 10/657, 10/658, 10/659, 10/660, 10/661, 10/662, 10/663, 10/664, 10/665, 10/666, 10/667, 10/668, 10/669, 10/670, 10/671, 10/672, 10/673, 10/674, 10/675, 10/676, 10/677, 10/678, 10/679, 10/680, 10/681, 10/682, 10/683, 10/684, 10/685, 10/686, 10/687, 10/688, 10/689, 10/690, 10/691, 10/692, 10/693, 10/694, 10/695, 10/696, 10/697, 10/698, 10/699, 10/700, 10/701, 10/702, 10/703, 10/704, 10/705, 10/706, 10/707, 10/708, 10/709, 10/710, 10/711, 10/712, 10/713, 10/714, 10/715, 10/716, 10/717, 10/718, 10/719, 10/720, 10/721, 10/722, 10/723, 10/724, 10/725, 10/726, 10/727, 10/728, 10/729, 10/730, 10/731, 10/732, 10/733, 10/734, 10/735, 10/736, 10/737, 10/738, 10/739, 10/740, 10/741, 10/742, 10/743, 10/744, 10/745, 10/746, 10/747, 10/748, 10/749, 10/750, 10/751, 10/752, 10/753, 10/754, 10/755, 10/756, 10/757, 10/758, 10/759, 10/760, 10/761, 10/762, 10/763, 10/764, 10/765, 10/766, 10/767, 10/768, 10/769, 10/770, 10/771, 10/772, 10/773, 10/774, 10/775, 10/776, 10/777, 10/778, 10/779, 10/780, 10/781, 10/782, 10/783, 10/784, 10/785, 10/786, 10/787, 10/788, 10/789, 10/790, 10/791, 10/792, 10/793, 10/794, 10/795, 10/796, 10/797, 10/798, 10/799, 10/800, 10/801, 10/802, 10/803, 10/804, 10/805, 10/806, 10/807, 10/808, 10/809, 10/810, 10/811, 10/812, 10/813, 10/814, 10/815, 10/816, 10/817, 10/818, 10/819, 10/820, 10/821, 10/822, 10/823, 10/824, 10/825, 10/826, 10/827, 10/828, 10/829, 10/830, 10/831, 10/832, 10/833, 10/834, 10/835, 10/836, 10/837, 10/838, 10/839, 10/840, 10/841, 10/842, 10/843, 10/844, 10/845, 10/846, 10/847, 10/848, 10/849, 10/850, 10/851, 10/852, 10/853, 10/854, 10/855, 10/856, 10/857, 10/858, 10/859, 10/860, 10/861, 10/862, 10/863, 10/864, 10/865, 10/866, 10/867, 10/868, 10/869, 10/870, 10/871, 10/872, 10/873, 10/874, 10/875, 10/876, 10/877, 10/878, 10/879, 10/880, 10/881, 10/882, 10/883, 10/884, 10/885, 10/886, 10/887, 10/888, 10/889, 10/890, 10/891, 10/892, 10/893, 10/894, 10/895, 10/896, 10/897, 10/898, 10/899, 10/900, 10/901, 10/902, 10/903, 10/904, 10/905, 10/906, 10/907, 10/908, 10/909, 10/910, 10/911, 10/912, 10/913, 10/914, 10/915, 10/916, 10/917, 10/918, 10/919, 10/920, 10/921, 10/922, 10/923, 10/924, 10/925, 10/926, 10/927, 10/928, 10/929, 10/930, 10/931, 10/932, 10/933, 10/934, 10/935, 10/936, 10/937, 10/938, 10/939, 10/940, 10/941, 10/942, 10/943, 10/944, 10/945, 10/946, 10/947, 10/948, 10/949, 10/950, 10/951, 10/952, 10/953, 10/954, 10/955, 10/956, 10/957, 10/958, 10/959, 10/960, 10/961, 10/962, 10/963, 10/964, 10/965, 10/966, 10/967, 10/968, 10/969, 10/970, 10/971, 10/972, 10/973, 10/974, 10/975, 10/976, 10/977, 10/978, 10/979, 10/980, 10/981, 10/982, 10/983, 10/984, 10/985, 10/986, 10/987, 10/988, 10/989, 10/990, 10/991, 10/992, 10/993, 10/994, 10/995, 10/996, 10/997, 10/998, 10/999, 10/1000, 10/1001, 10/1002, 10/1003, 10/1004, 10/1005, 10/1006, 10/1007, 10/1008, 10/1009, 10/1010, 10/1011, 10/1012, 10/1013, 10/1014, 10/1015, 10/1016, 10/1017, 10/1018, 10/1019, 10/1020, 10/1021, 10/1022, 10/1023, 10/1024, 10/1025, 10/1026, 10/1027, 10/1028, 10/1029, 10/1030, 10/1031, 10/1032, 10/1033, 10/1034, 10/1035, 10/1036, 10/1037, 10/1038, 10/1039, 10/1040, 10/1041, 10/1042, 10/1043, 10/1044, 10/1045, 10/1046, 10/1047, 10/1048, 10/1049, 10/1050, 10/1051, 10/1052, 10/1053, 10/1054, 10/1055, 10/1056, 10/1057, 10/1058, 10/1059, 10/1060, 10/1061, 10/1062, 10/1063, 10/1064, 10/1065, 10/1066, 10/1067, 10/1068, 10/1069, 10/1070, 10/1071, 10/1072, 10/1073, 10/1074, 10/1075, 10/1076, 10/1077, 10/1078, 10/1079, 10/1080, 10/1081, 10/1082, 10/1083, 10/1084, 10/1085, 10/1086, 10/1087, 10/1088